

Kontor **Cirklen**.dk

## HOSPITALITY

*Mats for all environments; entrance, lobby, office, restaurants, kitchen etc.*



**MATTING**

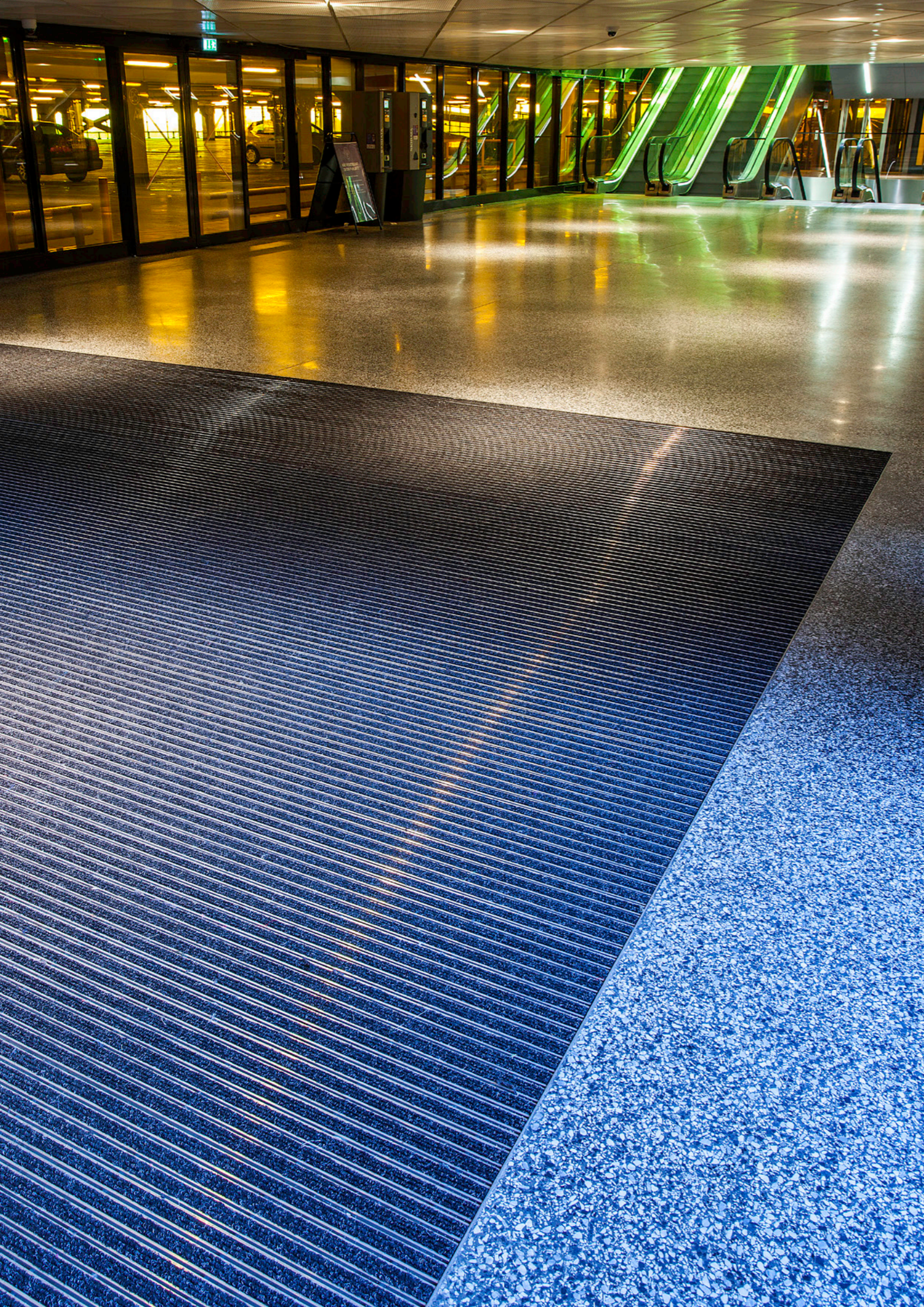


## The first, important impression

The entrance gives the first, important impression of a business. It should look neat and fresh for many years. Matting has been supplying carpets for over 40 years. This experience has made us the natural choice for professional installations in public spaces. All our carpets are of the same high quality, developed to withstand our harsh Nordic climate. The wear and tear on the carpet depends of course on the environment and traffic load, so we offer several different options to meet all needs. Warranty is a matter of course. As important as the functionality of the products is that they are easy to care for and maintain. Our carpets are easy to roll away for cleaning. They can withstand pressure washing and common cleaning agents.



*Many of our products have been assessed by Byggvarubedömningen.*

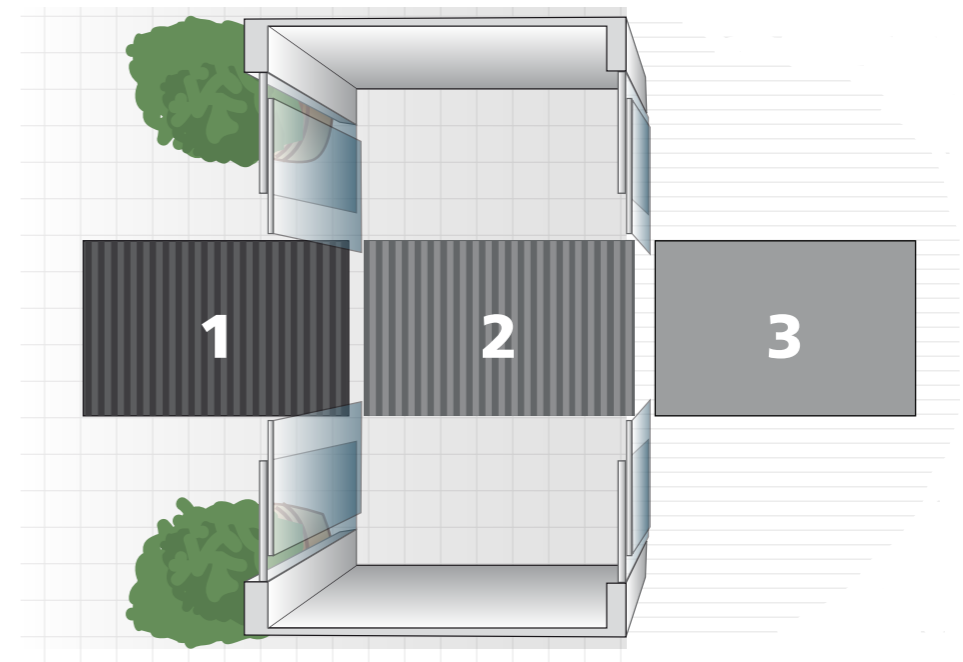


## Three-Zone entrance mats

The most effective solution is a three-zone entrance system: first, a scraper mat that removes coarse dirt; next, a combination mat for finer particles; and finally, a drying mat to absorb the last traces of moisture. However, it's not always possible to fit all three or even two zones.

With our proven 3-zone cleaning system, a term that means capturing up to 90% of the dirt and moisture brought in through the entrance. The most optimal solution is a three-zone solution, first a scraper mat that takes care of the worst dirt, then a combination mat that takes the fine dirt and finally a drying mat that also takes the last moisture.

Sometimes there is no room to build an entrance in two or three steps/zones. Then we recommend a combination mat that can both scrape off coarse dirt and dry up moisture.



### Zone 1 - scraper mat

The scraper mat should be at least 4-5 steps long (1.5-2 metres). It should collect the coarse dirt and keep it in the carpet while being easy to clean. The fact that it is slip-resistant and drained are two more features that are important when choosing a scraper mat.

### Zon 2 - scrape- / absorbent mat

The second step in the entrance solution is the combination mat. When there is no space to build a two- or three-step entrance, we recommend a combination mat, which can both scrape off residual dirt and absorb moisture.

### Zone 3 - absorbent mat

The final step in an entrance solution is a highly absorbent drying mat that soaks up the last of the moisture and takes care of the fine dirt.

## SCRAPER / COMBINATION / ABSORBENT MATS

First impressions matter – and your entrance is the first thing visitors see. A tidy, well-maintained entryway conveys professionalism and care. By dividing your entrance into three functional zones using the right types of mats, you can significantly reduce the amount of dirt and moisture brought inside, making cleaning easier and improving overall appearance.

**Zone 1: Stop coarse dirt outside** The first zone is located outside the building. This is where you place a durable scraper mat designed to remove coarse debris like mud, snow, and gravel. These mats are easy to clean, often with just a quick rinse.

**Zone 2: Combined cleaning and drying** The second zone is just inside the entrance. Here, a combination mat is used, which both scrapes and absorbs. It effectively handles sand, grit, and moisture in one step. A combination mat is a great all-in-one solution for the threshold area.

**Zone 3: Final moisture absorption** The third and final zone features a drying mat placed further inside. This mat absorbs the remaining moisture from shoe soles, helping to keep interior floors clean and dry – especially important during wet or snowy seasons. Drying mats are built for high absorbency and can be rinsed clean as needed.





## TACTILE GUIDANCE

Making buildings more accessible is a challenge. Both because few have the expertise and because the regulations are difficult to interpret. At Matting, we support you throughout the process – from evaluating the accessibility needs of your building to planning the guidance systems and installing them in accordance with legal requirements.

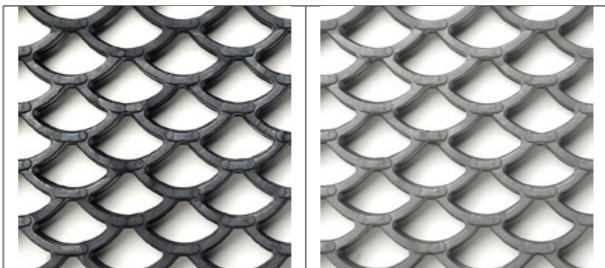
Visually impaired people need clear identification points to find their way around. We provide both visual and tactile (tangible) guidance systems for both indoor and outdoor environments. Our range is available in a variety of materials to suit different floor surfaces and environments.



### SCRAPER MATS

JAGUAR is a durable mat that can withstand tough, high-traffic entrances and scrapes off dirt very effectively, the open hole pattern holds large amounts without looking unsightly. The low weight of the mat makes it easy to roll up for cleaning. The back is drained in two directions for the best drainage and evaporation. It is made up of modules, 400x100 mm. You can choose between buying a ready-made mat according to your measurements, if necessary, the mat is easily cut on site for maximum fit. Or choose to order loose modules and build your rug yourself, the modules are easily assembled without special tools. If a module gets damaged, you simply replace it on site. This makes the Jaguar carpet a long-term and very economical option.

**JAGUAR ECO** is a brand new PVC-free product made from 50% recycled plastic. It is a durable modular carpet in TPE, for entrances with tough requirements similar to the Jaguar mat above.





### COMBINATION MATS

COMBI ROLL GOODS ECO is a PVC-free exclusive combination mat that is very suitable as a walking mat in shopping centres, for example. It is both stylish, sound-absorbing and slip-resistant. COMBI mats are made from recycled PET yarn, a process that re-uses up to an impressive 68 PET bottles per square metre. The rolls are 183 cm wide and 20 metres long. The carpet has no bevelled edges and the backing is completely smooth, so it can also be laid edge to edge to cover very large areas. The longitudinal pattern is repeated across the width, making the joints completely invisible. The PET polyester surface layer has good absorbency and dries quickly. The deep-pressed pattern effectively scrapes off coarse dirt. The underside of the mat is made of durable SBR rubber containing recycled rubber. The properties mean that it requires minimal maintenance, resulting in a carpet with very good operating economy.

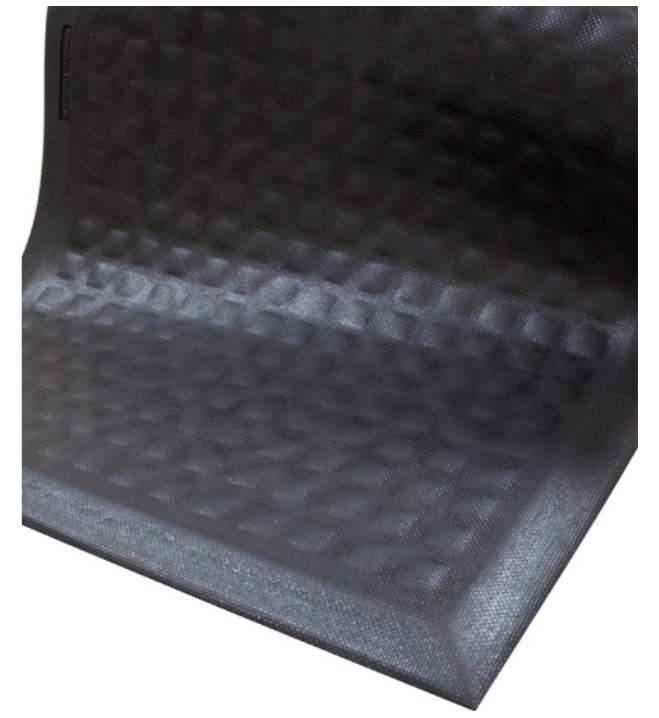
**COMBI TILE ECO** is a buildable variant similar to Roll. Easily to build a carpet in the size you want, easy to cut the tiles to the exact dimensions. The tiles are intended for placement in a floor drain or in combination with a carpet ramp directly on the floor. They do not need to be glued, which makes it easy to lift up individual tiles for cleaning or replacement.





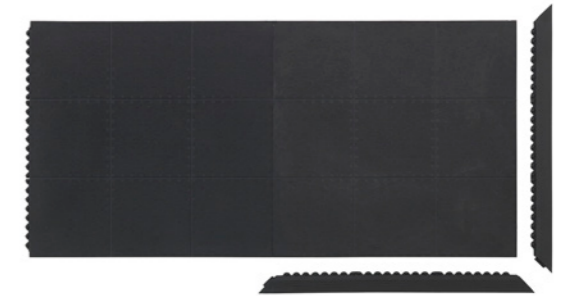
## WORKPLACE MATS

More and more companies have realised the importance of a good working environment, and ergonomics is a topic we hear more and more about. It is about how working postures, movements at work, physical strain and other conditions affect the body's muscles and joints. It is also clear that physical strain is one of the most common causes of occupational injury, accounting for 40% of all reported occupational injuries. Ergonomic workplace mats are a step in the right direction in terms of improvements for staff standing and working on hard surfaces.



## KITCHEN AND BARS

Mats in environments where there are extra high demands on hygiene, such as food handling. These mats are made for environments where you handle food or have other high demands on hygiene and chemical resistance. The special, dense rubber compound makes it difficult for bacteria to take hold and the mats can be disinfected with antiseptic chemicals. The high nitrile rubber content makes them resistant to oils, grease and chemicals, while providing high durability and heat resistance. The heavy-duty pattern makes them highly slip-resistant and the open profiles let moisture through and ventilate the floor.





## STANDING MATS

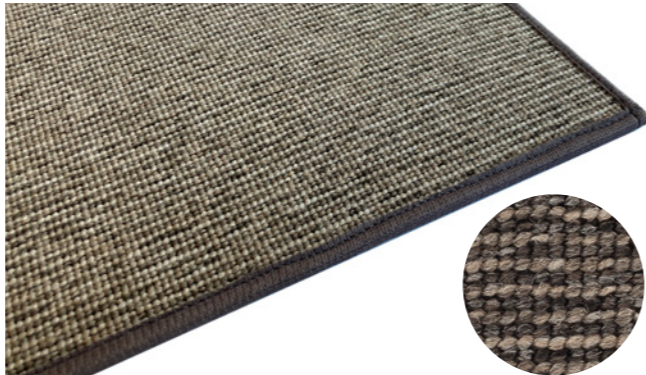
Many already have a height adjustable desk at their workplace, but about 80% still sit and work. This is because we are unaccustomed to standing, that you get a pain in the legs, back, feet, etc. Furthermore, we have inferior knowledge of the benefits of standing and the dangers of sitting too much. If you work standing up for long periods, it's a good idea to take the weight off your feet with a workplace mat. The StandUp workplace mat is specially produced to distribute your weight evenly between your feet, and help you to stand up for longer without getting tired.





## FLOOR PROTECTORS

A floor protector protects floors and carpets from wear and tear and soiling. The most common use is at the workplace to protect the floor from the wheels of the office chair, but floors are often exposed to wear and tear or moisture in many other places. A properly sized floor protector is also suitable for the coffee or water dispenser, the printer or anywhere else where the floor needs protection. Both in PET and textile.





## Lobby-/Interior carpets

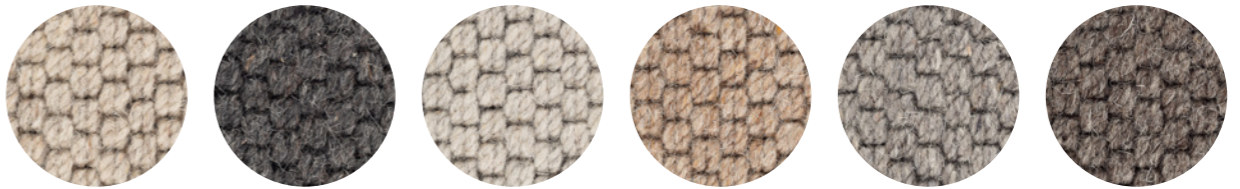
We offer a wide selection of textile carpets in a variety of colors and materials, including wool, sisal, velour, and loop pile. Our carpets come in a standard width of 400 cm and are supplied on rolls of approximately 25 linear meters. Loose-lay carpets can be edged with overlock stitching, slimline, or binding tape for a refined finish.





**PEACEFUL ACOUSTIC ENVIRONMENT**

Carpets help absorb sound, creating a quieter and more relaxing atmosphere—perfect for homes, offices, or any setting where calm is essential. Carpets also trap dust and allergens, improving indoor air quality when vacuumed regularly. Unlike hard flooring, which allows particles to circulate freely, carpets support a cleaner, healthier indoor environment.





## CORRIDOR

Corridor rugs are more than just a decorative detail – they are a practical and stylish solution that transforms narrow spaces into welcoming walkways. Whether it's an entryway, hotel corridor, or office hallway, corridor rugs add warmth and comfort while protecting your floors. A corridor rug acts as a protective layer, helping to preserve the condition of your floors – especially in high-traffic areas. The rugs absorb sound and reduce echoes, creating a quieter and more comfortable environment – ideal for hotels. With a wide range of colors, patterns, and materials, it's easy to find a corridor rug that complements your existing décor. It becomes a stylish element that ties the space together.



### Unique solutions for unique spaces

We offer more than just standard rugs. Our custom solutions are tailored to fit your needs, your space, and your brand. Whether you're aiming to make a strong first impression or solve practical challenges in tight or high-traffic areas – we provide rugs that truly make a difference.



### Mats with custom prints and logos

Elevate your entrance or interior with a mat that features your logo, branded colors, or a unique design. Using high-quality printing techniques, we create rugs that are not only functional but also reinforce your brand identity and visual expression.

### Mats for elevators and staircases

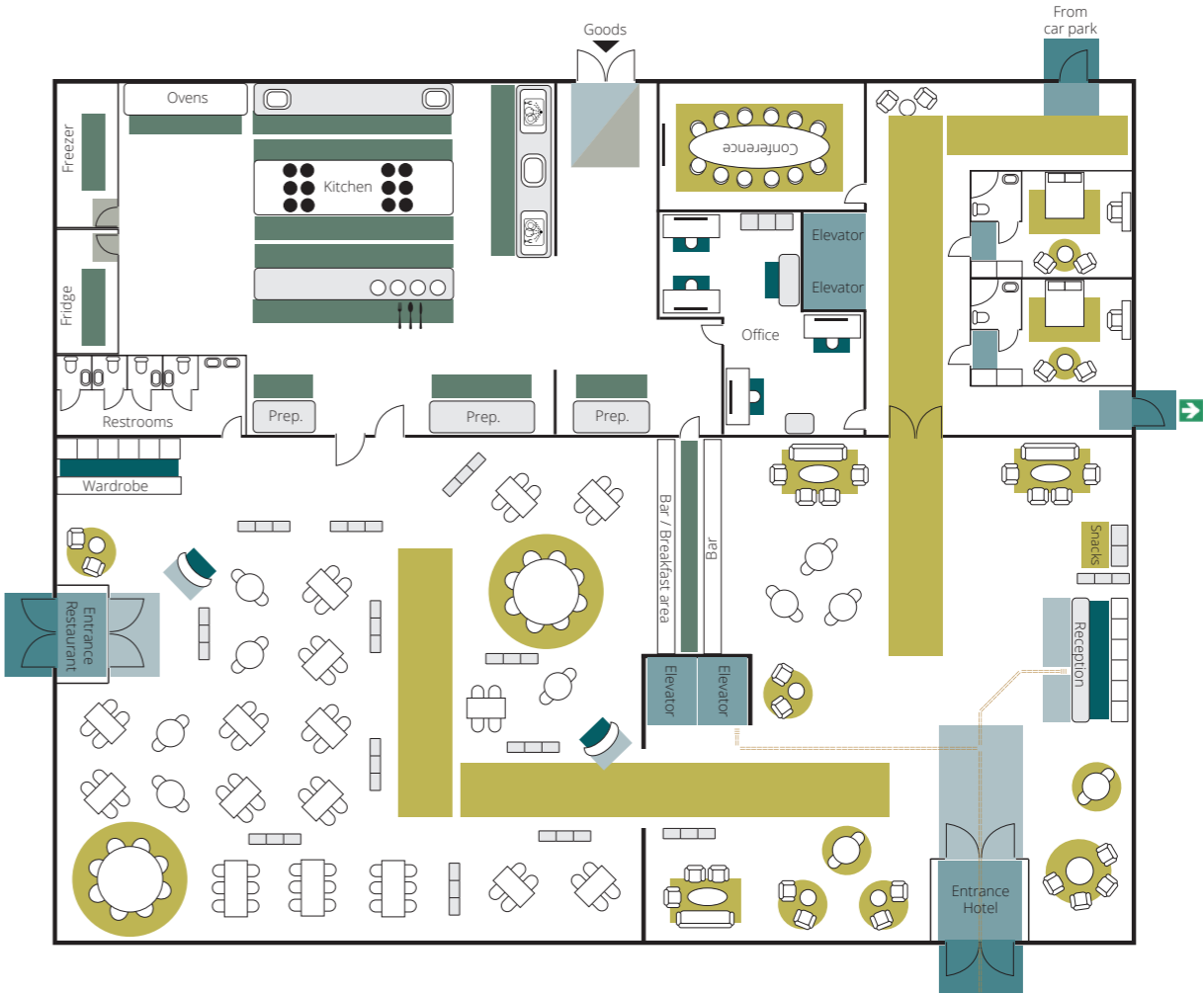
Tight spaces like elevators or staircases require special attention. We offer made-to-measure rugs specifically designed for these areas – improving both safety and aesthetics. Our rugs are built to withstand heavy wear while maintaining a clean, cohesive look throughout your building.

Every space is different – which is why we work closely with you to find the right material, size, and design for your specific needs. Our goal is to deliver mats that not only look great but perform exceptionally well in their intended environment.





# Matting placement guide HOSPITALITY



- Entrance mats - scraper (outdoor Zone 1)
- Entrance mats - combination (indoor Zone 2)
- Entrance mats - dry/absorbent (indoor Zone 3)
- Tactile guidance system

- Floorprotecting/interior mats etc.
- Workstation mats for office
- Workstation mats for warehouse
- Workstation mats for welding area etc.
- Workstation mats for wet area etc.
- Special mats /workstation mats lab

**Crafting memorable experiences is crucial in the world of hospitality, where guest comfort and satisfaction take precedence. Our mats and matting solutions are meticulously engineered to ensure a warm, inviting, and homely atmosphere.**

Every detail is vital. Our mats, found in hotels and resorts, bed-and-breakfasts and vacation rentals, create an unforgettable and luxurious guest experience.

Specifically designed entrance mats extend a warm welcome while efficiently capturing dirt and moisture, guaranteeing cleanliness and safety.



## GLASS CONTRAST MARKINGS

Contrast markings for glass surfaces made from solid-colored film for improved finish and durability. To ensure optimal contrast in varying lighting conditions, two-colored markings are recommended. This is because the background can vary depending on the viewing angle and whether, for example, the building lights are on or off.



With our round, two-colored standard marking "half-moons," you always get strong contrast regardless of what's behind the glass. We can also produce custom markings upon request - limited only by your imagination.

Flertalet av våra produkter är bedömda av:

**BYGGVARUBEDÖMNINGEN™**

 **SundaHus**

# MATTING

Matting AB, Box 514, SE-441 15 Alingsås, Sweden  
Tel: +46 322 67 08 00, E-post: [projekt@matting.se](mailto:projekt@matting.se)  
[www.matting.se](http://www.matting.se)